

**MAXIMAL**

F | W 2017



Gypsy Tango Pendant Necklace  
and Pendular Disc Earrings





**SOPHISTICATED | CREATIVE**

L: Stone Box Necklace with Rubies and the Small Flippy Earrings on Wire.

R: Petal Threader Earring.





**CONFIDENT | INSPIRING**

L: Square Ball Earrings, Pont des Arts Cuff, Miro Neckalce and Long Mineral Necklace. R: Gypsy Tango Button Earrings and Morion Triangle Necklace.







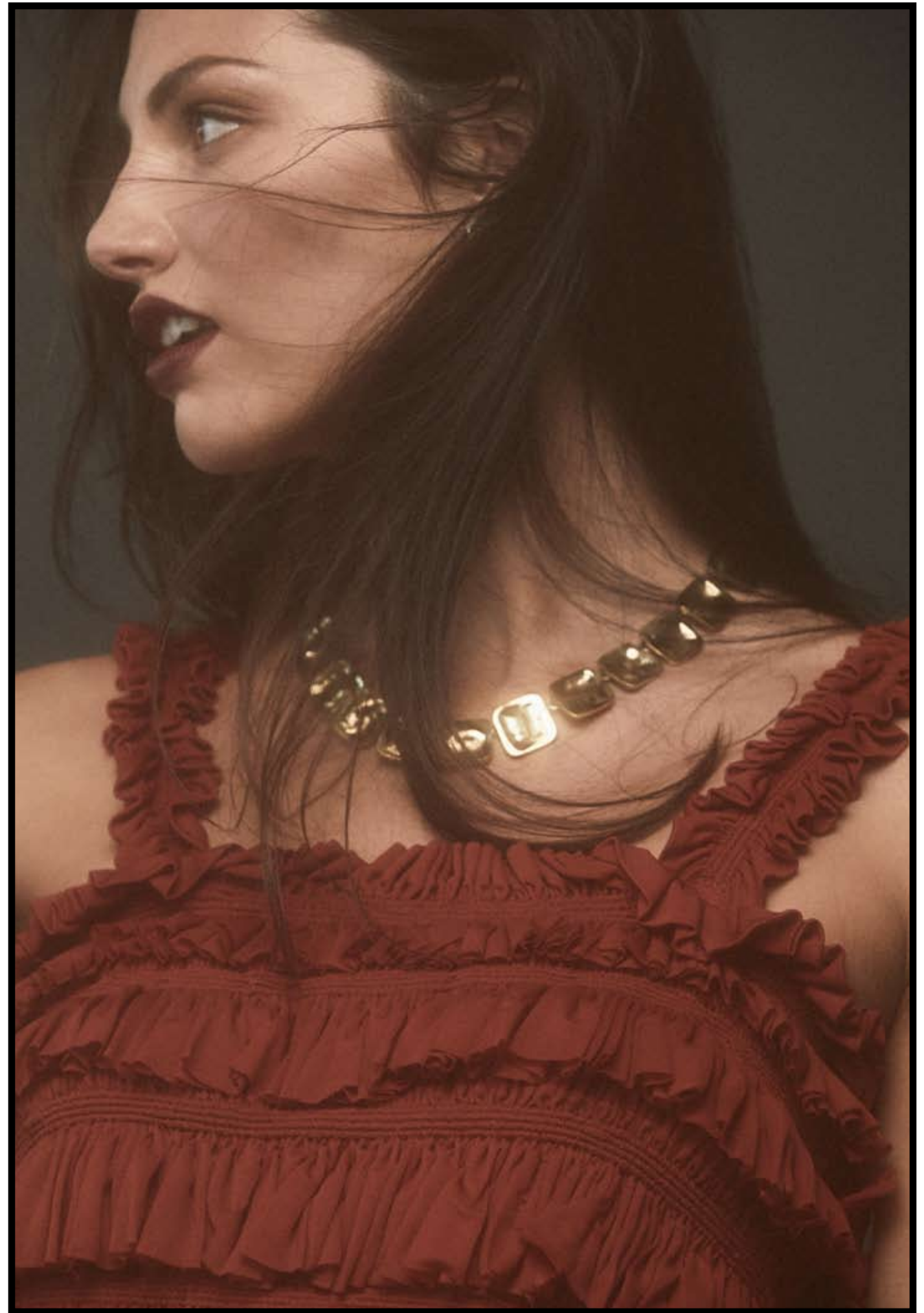
**CHIC | LEGENDARY**

L: Box Circle Earrings, Narrow Flex Cuff,  
Ball Collar Necklace, Green Zircon &  
Garnet Ring and Green Zircon Wrap  
Ring. R: Metal Slice Earrings, Tear Drop  
Lariat and Multi Stone Fancy Band Ring.





**QUIRKY | FEMININE**  
L: Moss Aquamarine  
Slice Earring, Igneous Charm  
Necklace and Metamorphic Cuff.  
R: Square Necklace.







**POWERFUL | PLAYFUL**

L: Disc Earrings and Tear Drop Pin.

R: Moss Aquamarine Square Box Earrings, XL Cuff and Disc Collar.

Jewelry Designer: Mclaine Richardson

Photography: Brett Warren

Creative Director/Stylist: Connie Cathcart-  
Richardson

Beauty: Aña Monique | AMAX Talent

Model: Ellen Williams | AMAX Talent

Wardrobe provided by United Apparel Liquidators

