



FUSION



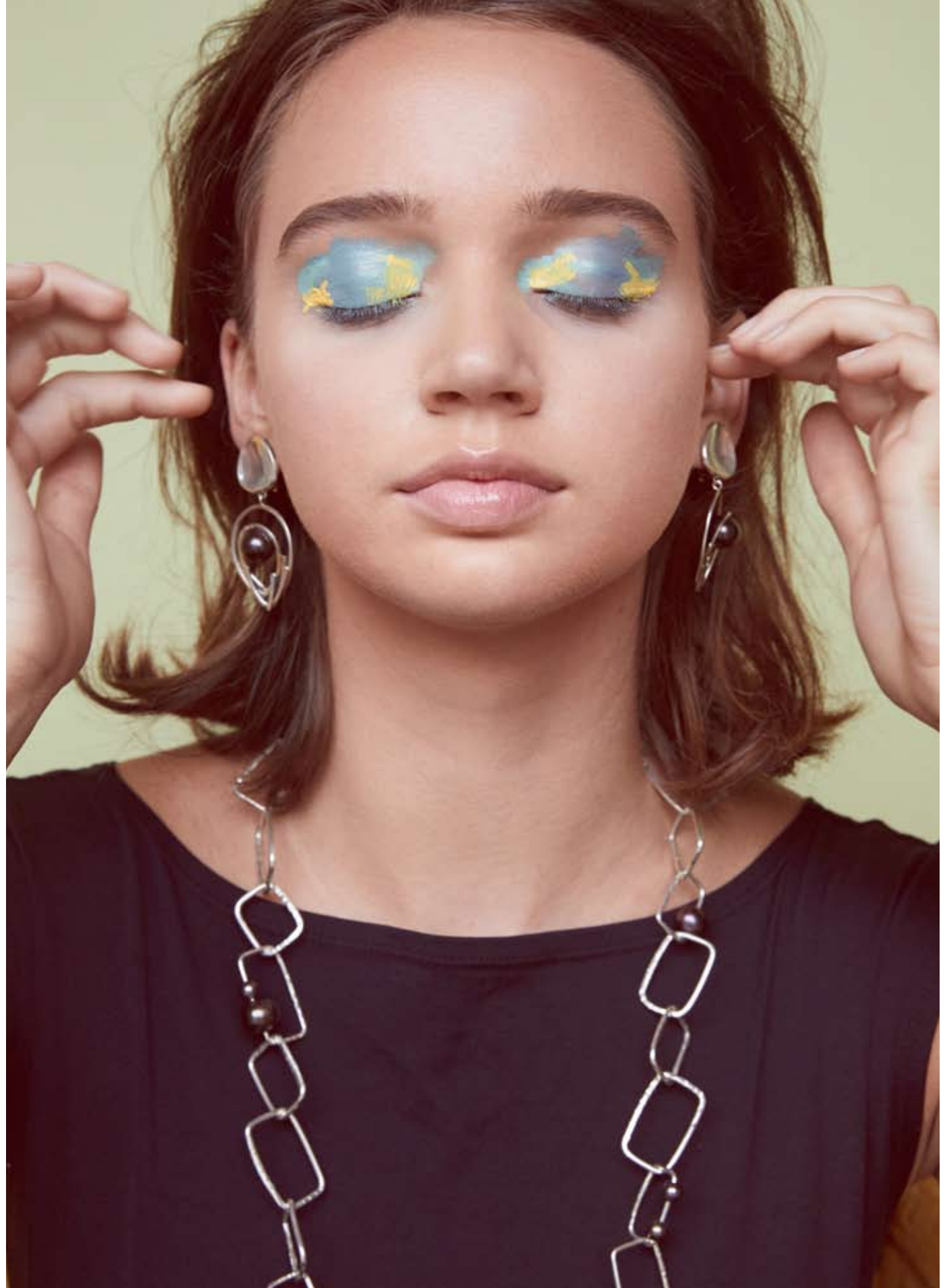
FALL 2018

PHOTOGRAPHED BY BRETT WARREN

margaretellisjewelry.com



L: Syphon Pearl Drop Ear, Drip Dash Bangle Cuffs, Locket Necklace, Negative Space Ring and Smoky Quartz Pear Ring.
R: Mocha Earring and Long Steeped Pearl Necklace.





L: Molecular Pearl Ear, Steeped Pearl Toggle Bracelet and Drip Drop Neck.
R: Ring Earrings, Mixed Pearl Bangles, Ball Bangles, Triplet Bangles, Skinny Bangles, Bialetti Necklace and Blue Mabe Pearl Birdsnest Ring.



L: Doppio Ear, Latte Square Toggle
Bracelet, Bentz Latte Neck and White
Topaz Trillion Ring.
R: Macchiatto Ear, Double Espresso
Neck and Negative Space Ring.

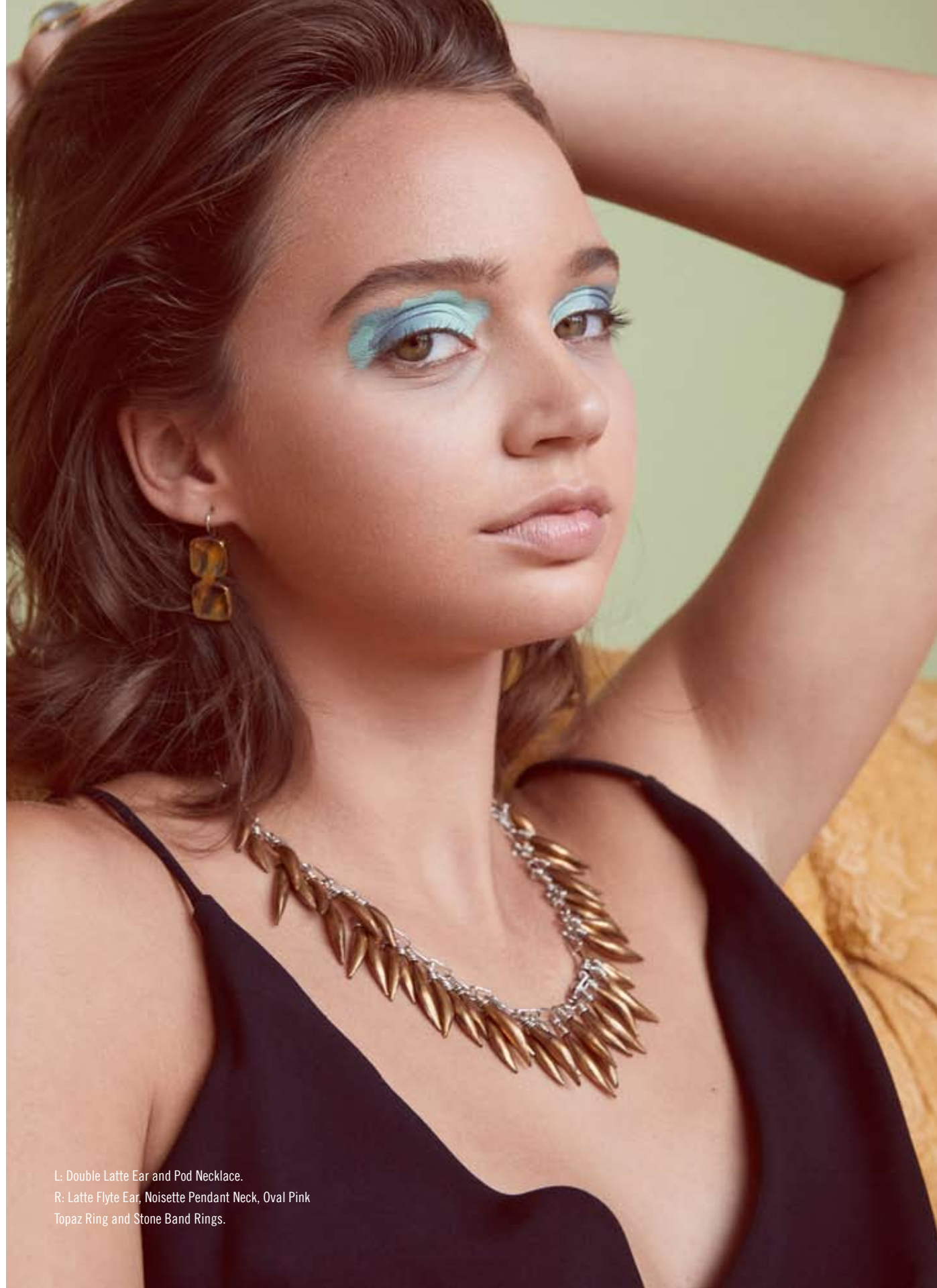




L: Grand Double Latte Ear and Frappe Neck.
R: Gypsy Rings Ear, Latte Collar Neck and Carnelian Fusion Ring.



L: Ristretto Pearl Drop Ear, Bentz Cuff,
Allure Necklace and Pearl Dots Ring.
R: Latte Hoop Ear and Pearl Latte Short
Pendant Neck.



L: Double Latte Ear and Pod Necklace.
R: Latte Flyte Ear, Noisette Pendant Neck, Oval Pink
Topaz Ring and Stone Band Rings.



Jewelry Designer: McLaine Richardson
Photography: Brett Warren Photography
Creative Director/Stylist: Connie Richardson
Beauty: Ana Liza Witham
Model: Lily Woosley | AMAX Talent
Wardrobe provided by United Apparel Liquidators